

Project Title and Location: **Exterior Window Replacement  
160-430 Boullee St., London  
LMHC Contract No. 2018-0015**

## **ADDENDUM NO. 1**

### **DIRECTIVE**

The previous window and door tender and any previous addendums which were due Thursday, August 2<sup>nd</sup>, 2018, are now null and void and have been replaced with the Exterior Window Replacement tender of the same contract No. 2018-0015.

This addendum shall form an integral part of the plans and specifications for the above project and shall be read in conjunction therewith. This addendum shall, however, take precedence over all requirements of the previously issued drawings and specifications with which it may prove to be at variance, unless otherwise clarified by the Engineer.

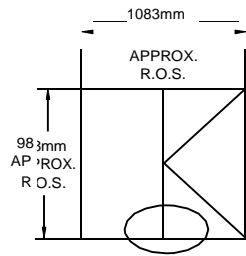
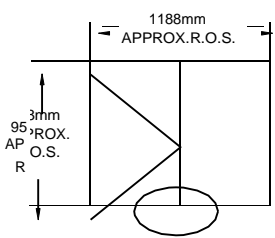
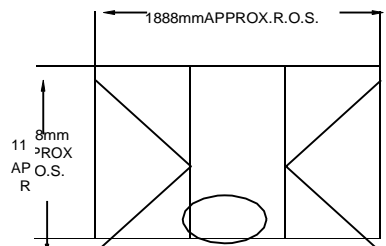
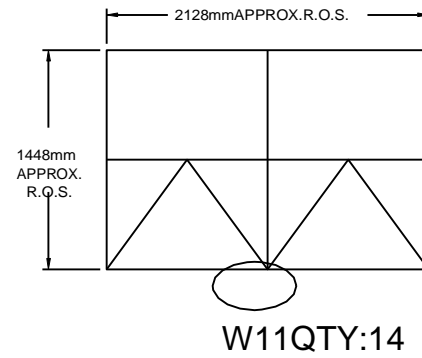
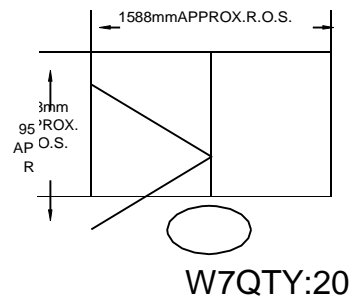
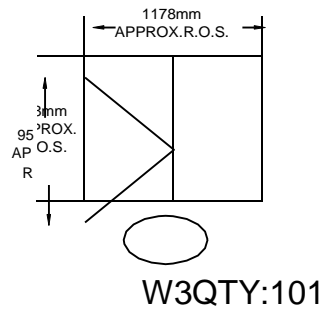
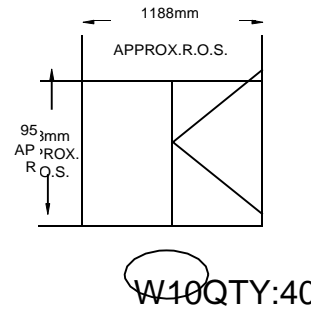
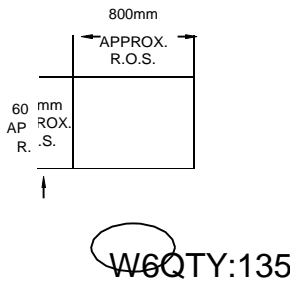
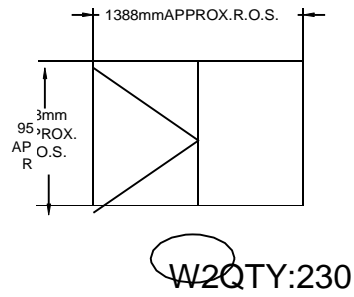
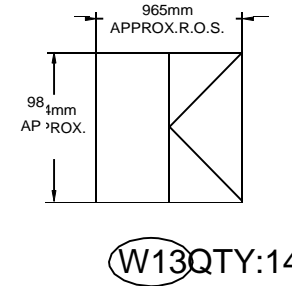
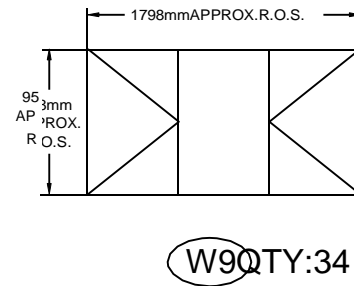
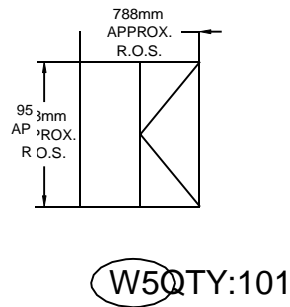
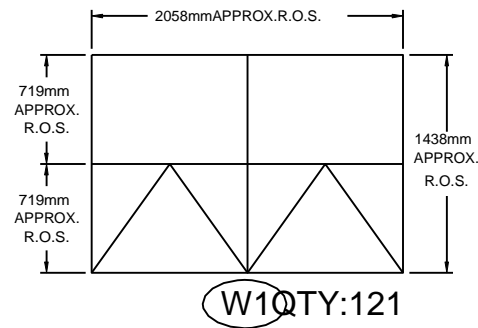
This addendum must be signed by the Tenderer in the appropriate space and must be attached to the back of the Form of Tender and placed in the envelope for submission at the time of tendering. Tenders not including this addendum signed as requested, may be rejected as informal.

### **GENERAL CLARIFICATIONS FROM SITE SHOWING – October 17, 2018:**

The following items required clarification and shall be adhered to during the tendering and completion of this contract.

- As noted in Section 01 11 00 – Scope of Work, Clause 1.5.2, LMHC will prepare all units for work, including the removal of blinds and relocation of tenant property.
- The contractor is to invoice LMHC upon the completion of each block of units.
- The contractor may work through the winter while weather permits. All work must be completed by June 30, 2019 as stated in Section 01 11 00 – Summary of Work, Clause 1.3.1.
- All window openings will require prefinished metal flashings on all four sides of each opening. No brick molds will be used onsite.
- Window Nos. W1 and W11 will be changed two (double) single hung windows per opening. Revised drawings are attached to illustrate the change.
- Vinyl wrapped window trim is NOT to be used. Specified painted trim is to be used.

# WINDOW OPENING SIZES



## LEGEND W4 QTY:101

R.O.S.-ROUGH OPENING SIZE

## NOTE W8 QTY:34

- CONTRACTOR TO VERIFY SLIDER DIRECTION ON-SITE FOR ALL WINDOWS.
- CONTRACTOR TO VERIFY ALL WINDOW DIMENSIONS.
- ALL WINDOW WORK TO BE IN ACCORDANCE WITH THESE SPECIFICATIONS.

## STAMP

**W12 QTY:28**

THIS DRAWING IS THE PROPERTY OF exp SERVICES INC.  
ANY REPRODUCTION BY ANY MEANS IS STRICTLY PROHIBITED  
WITHOUT THE WRITTEN CONSENT OF exp SERVICES INC.  
THIS DRAWING AND DESIGN INTENT IS FOR THE PROJECT ONLY.

**expServices Inc.**  
t: +1.519.963.3000 | f: +1.519.963.1152  
15701 Robin's Hill Road  
London, ON N5V0A5  
Canada

• BUILDINGS • ENERGY • EARTH & ENVIRONMENT •  
• INFRASTRUCTURE • SUSTAINABILITY •

### NOTE:

1. THE CONTRACTOR IS RESPONSIBLE FOR DETERMINING EXISTING ASSEMBLIES, SITE CONDITIONS AND ALL DIMENSIONS.
2. DO NOT SCALE DRAWINGS.
3. ALL DEFICIENCY LOCATIONS SHOWN ON DRAWINGS ARE APPROXIMATE.

## CLIENT

**LMHC**

PROJECT 379 DUNDAS STREET, SUITE 207  
LONDON, ONTARIO, N6B1V5

**WINDOW REPLACEMENT**

TITLE **DESIGN DETAILS**

**160-430 BULLIFF STREET**

DESIGN	N/A	PROJECT NO. LON-00016400-BS
DRAWN BY	Window	DRAWING NO. <b>1.1R</b>
CHECKED	N.J.O.	
DATE	OCT 2018	
SCALE	N.T.S.	

## WINDOWSCHEDULES

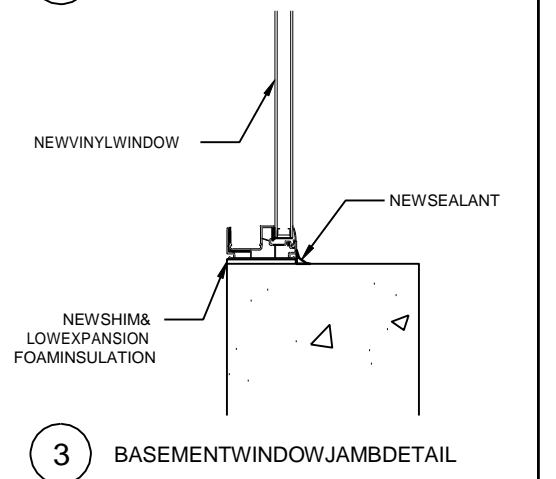
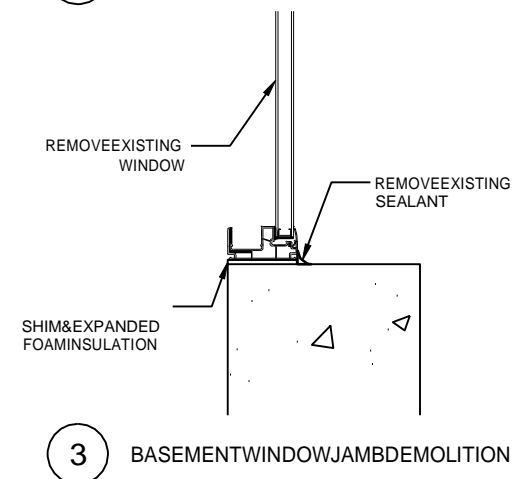
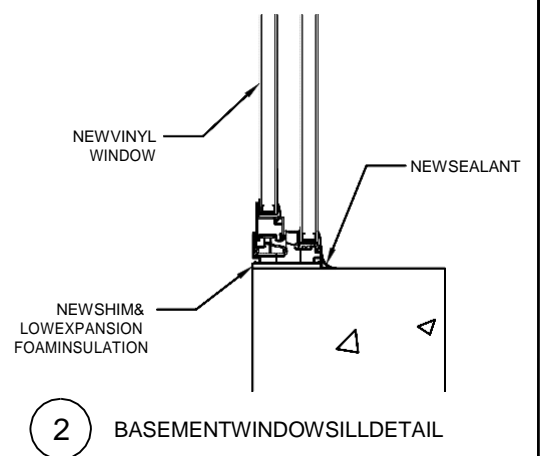
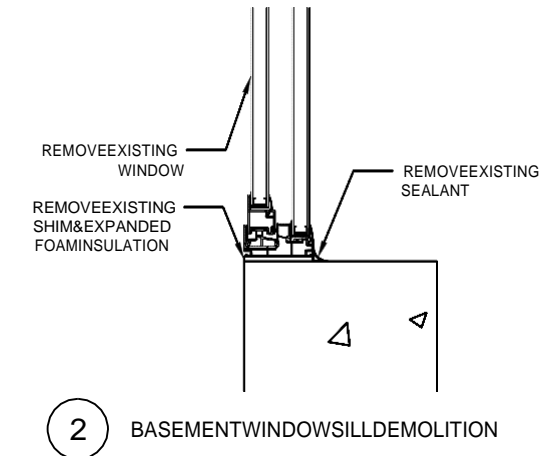
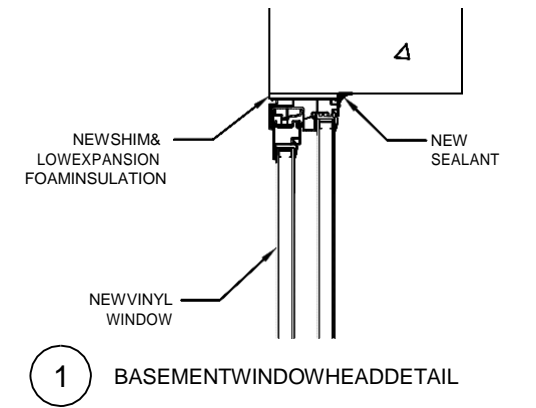
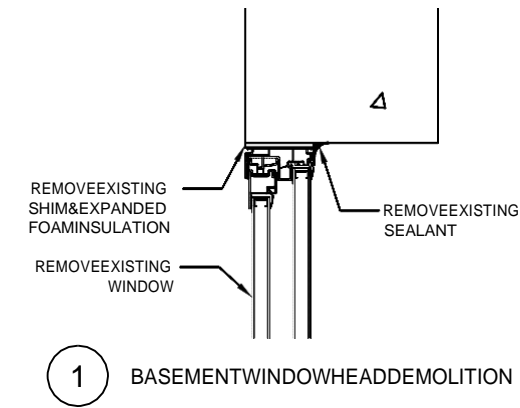
TOTAL QUANTITY OF WINDOWS					
TYPE	MATERIAL	OPENING SIZE (mm)	QUANTITY	ID	NOTES
DOUBLE SINGLE HUNG	VINYL	2058x1438	121	W1	
SLIDER	VINYL	1388x958	230	W2	
SLIDER	VINYL	1178x958	101	W3	
SLIDER	VINYL	1888x1138	101	W4	
SLIDER	VINYL	788x958	101	W5	
FIXED	VINYL	800x600	135	W6	BASEMENT WINDOW
SLIDER	VINYL	1598x958	20	W7	
SLIDER	VINYL	1188x958	34	W8	
SLIDER-FIXED-SLIDER	VINYL	1798x958	34	W9	
SLIDER	VINYL	1188x958	40	W10	
DOUBLE SINGLE HUNG	VINYL	2128x1448	14	W11	
SLIDER	VINYL	1083x988	28	W12	
SLIDER	VINYL	965x984	14	W13	

3 BEDROOM UNIT - WINDOWS (PER UNIT)					
TYPE	MATERIAL	LOCATION	OPENING SIZE (mm)	QUANTITY	ID
DOUBLE SINGLE HUNG	VINYL	GROUND FLOOR, FRONT	2058x1438	1	W1
SLIDER	VINYL	SECOND FLOOR BEDROOM, FRONT & REAR	1388x958	2	W2
SLIDER	VINYL	SECOND FLOOR BEDROOM, FRONT	1178x958	1	W3
SLIDER	VINYL	GROUND FLOOR, REAR	1888x1138	1	W4
SLIDER	VINYL	SECOND FLOOR BATHROOM, REAR	788x958	1	W5
SLIDER	VINYL	BASEMENT, REAR	800x600	1	W6

4 BEDROOM UNIT - WINDOWS (PER UNIT)					
TYPE	MATERIAL	LOCATION	OPENING SIZE (mm)	QUANTITY	ID
DOUBLE SINGLE HUNG	VINYL	GROUND FLOOR, FRONT	2058x1438	1	W1
SLIDER	VINYL	SECOND FLOOR, FRONT	1588x958	1	W7
SLIDER	VINYL	SECOND FLOOR BEDROOM, FRONT	1188x958	1	W8
SLIDER-FIXED-SLIDER	VINYL	GROUND FLOOR, REAR	1798x958	1	W9
SLIDER	VINYL	SECOND FLOOR BEDROOM, REAR	1188x958	2	W10
SLIDER	VINYL	BASEMENT, REAR	800x600	1	W6

5 BEDROOM UNIT - WINDOWS (PER UNIT)					
TYPE	MATERIAL	LOCATION	OPENING SIZE (mm)	QUANTITY	ID
DOUBLE SINGLE HUNG	VINYL	GROUND FLOOR, FRONT	2128x1448	1	W11
SLIDER	VINYL	SECOND FLOOR BEDROOM, FRONT & REAR	1388x958	2	W2
SLIDER	VINYL	SECOND FLOOR BEDROOM, FRONT	1188x958	1	W8
SLIDER	VINYL	GROUND FLOOR, REAR	1083x988	2	W12
SLIDER	VINYL	GROUND FLOOR KITCHEN, REAR	965x984	1	W13
SLIDER-FIXED-SLIDER	VINYL	SECOND FLOOR BEDROOM, REAR	1798x958	1	W9
SLIDER	VINYL	BASEMENT, REAR	800x600	1	W6

## WALL SECTIONS



### NOTE

- UNIT 346 ONLY REQUIRES NEW PRE-FINISHED METAL FLASHING AT THE WINDOWS.
- CONTRACTOR TO VERIFY WINDOW QUANTITIES ON-SITE.
- CONTRACTOR TO VERIFY WALL AND WINDOW SECTIONS ON-SITE.
- ALL WINDOW WORK TO BE IN ACCORDANCE WITH THESE SPECIFICATIONS.

STAMP

THIS DRAWING IS THE PROPERTY OF exp SERVICES INC. ANY REPRODUCTION BY ANY MEANS IS STRICTLY PROHIBITED WITHOUT THE WRITTEN CONSENT OF exp SERVICES INC. THIS DRAWING AND DESIGN INTENT IS FOR THIS PROJECT ONLY.

exp Services Inc.

t: +1.519.963.3000 | f: +1.519.963.1152  
15701 Robin's Hill Road  
London, ON N5V 0A5  
Canada

www.exp.com



- BUILDINGS
- ENERGY
- EARTH & ENVIRONMENT
- INFRASTRUCTURE
- SUSTAINABILITY

**NOTE:**

1. THE CONTRACTOR IS RESPONSIBLE FOR DETERMINING EXISTING ASSEMBLIES, SITE CONDITIONS AND ALL DIMENSIONS.
2. DO NOT SCALE DRAWINGS.
3. ALL DEFICIENCY LOCATIONS SHOWN ON DRAWINGS ARE APPROXIMATE.

CLIENT **LMHC**  
379 DUNDAS STREET, SUITE 207  
LONDON, ONTARIO, N6B 1V5

PROJECT **WINDOW REPLACEMENT  
DESIGN DETAILS**  
160-430 BOULLE STREET

TITLE **Schedules & Wall Section Details**

DESIGN	N/A	PROJECT NO. LON-00016400-BS LMHC #2018-0015 DRAWING NO. <b>1.2R</b>
DRAWN BY	A.K.	
CHECKED	N.J.O.	
DATE	OCT 2018	
SCALE	N/A	